

The Stall Street Journal

A MONTHLY PEER HEALTH EDUCATOR NEWSLETTER
APRIL 2021

Consent is a F*CKING Requirement

Consent

- actively agreeing to be sexual with someone
- lets someone know that sex is wanted
- can be changed at any time, just because consent was given once does not mean it will be given again
- is a firm **"Yes"**; if your partner seems unsure, silent, or under the influence you may not proceed

Sexual consent is related to oral sex, genital touching and vaginal or anal penetration



RESOURCES

ANYONE can be a victim, no matter their:

- gender
- race
- sexual orientation
- age

Sexual activity without consent is rape or sexual assault

According to the National Sexual Violence Resource Center (2015),

- One in 5 women and one in 16 men are sexually assaulted while in college More than 90% of sexual assault victims on college campuses do not report the assault
- 63.3% of men at one university who self-reported acts qualifying as rape or attempted rape admitted to committing repeat rapes

Under the influence of drugs or alcohol??

- neither party has the right to proceed in any sexual activity
- at least one party would be considered impaired which means that consent cannot be given or obtained

Follow us on Instagram

@hartwick_peerhealth

The Stall Street Journal

A MONTHLY PEER HEALTH EDUCATOR NEWSLETTER
APRIL 2021

It Happens More Than You Think



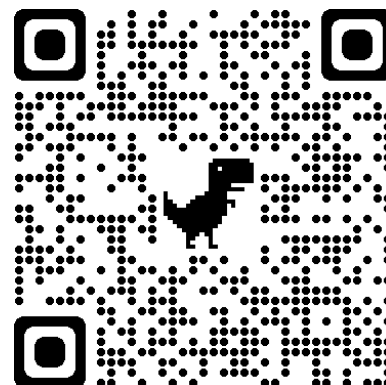
55% of women and 75% of men were drinking or taking drugs before being involved in date rape.

Over 50% of all post-secondary sexual assaults involved drugs or alcohol.

52% of students who drank alcohol in the last 12 months reported doing something they later regretted.

Reference:
<https://carleton.ca/cudontknow/sexual-assault-drinking/>

*Follow us on Instagram
@hartwick_peerhealth*



RESOURCES

The Stall Street Journal

A MONTHLY PEER HEALTH EDUCATOR NEWSLETTER
APRIL 2021

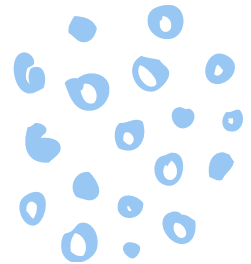
Sexual Assault Awareness Definitions

RAINN.ORG



April is Sexual Assault Prevention awareness month.

If, as you read this, you feel you or someone you know needs immediate help or more information, consider the following resources available to you now.



Sometimes all of the legal jargon can get in the way of grasping what constitutes sexual assault. Check out the definitions below to have a better understanding of what this month is all about.

Check out Hartwick specific information here:

Resources specifically developed for male victims can be found at lin6.org



National Domestic Violence Hotline

1-800-799-7233, or by online chat

National Sexual Assault Hotline

1-800-656-4673, or by online chat

Bystander - person who observes a crime, impending crime, conflict, potentially violent or violent behavior, or conduct that is in violation of rules, laws, or policies.

ACTIVE bystander - someone who not only witnesses a situation, but takes steps to speak up or step in to keep a situation from escalating or to disrupt a problematic situation.

Dating violence - type of intimate partner violence that happens between people in a close relationship. Often starts with small acts, like teasing and name-calling. People often think that these actions are a "normal" part of relationships. Even behaviors that seem small can lead to more serious violence, like physical assault and rape. Perpetrators often use physical violence, threats, emotional abuse, harassment, or stalking to control their partner's behavior.

Sexual assault - any type of sexual activity or contact, including rape, that happens without your consent. Can include non-contact activities, such as someone "flashing" you (exposing themselves to you) or forcing you to look at sexual images.

Also called **sexual violence** or **abuse**. Legal definitions of sexual assault and other crimes of sexual violence can vary slightly from state to state.

If you've been assaulted, it is **NEVER** your fault.

Domestic violence - a pattern of coercive tactics that can include physical, psychological, sexual, economic, and emotional abuse, perpetrated by one person against an adult intimate partner, with the goal of establishing and maintaining power and control.

Occurs in all kinds of intimate relationships, including married couples, people who are dating, couples who live together, people with children in common, same-sex partners, people who were formerly in a relationship with the person abusing them, and teen dating relationships.

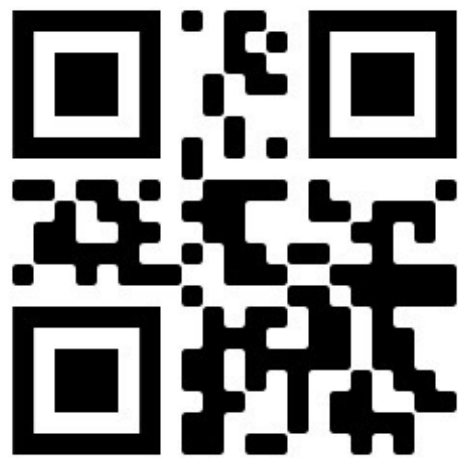
Follow us on Instagram

@hartwick_peerhealth

The Stall Street Journal

A MONTHLY PEER HEALTH EDUCATOR NEWSLETTER
APRIL 2021

If you're a man who has experienced sexual abuse or assault,
YOU ARE NOT ALONE.



At least **1** in **6** men have been sexually abused or assaulted.

Follow us on Instagram

@hartwick_peerhealth

The Stall Street Journal

A MONTHLY PEER HEALTH EDUCATOR NEWSLETTER
APRIL 2021

Sexual Violence happens in same sex relationships too!

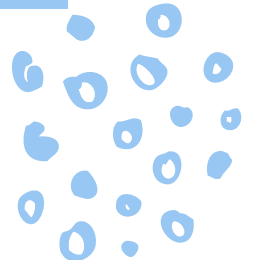
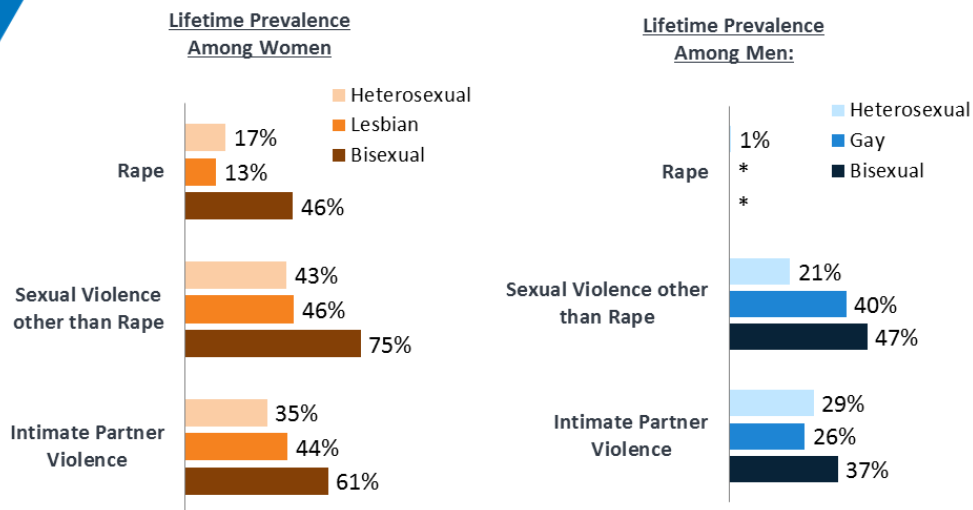


Figure 4
Sexual Violence, by Sexual Orientation, 2010

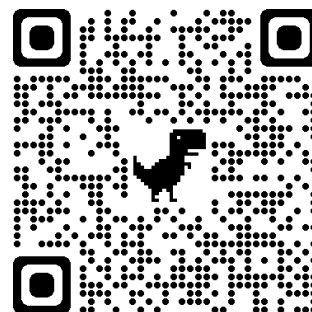


Sexual Violence other than rape includes being made to penetrate, sexual coercion, unwanted sexual contact, and non-contact unwanted sexual experiences. Perpetrator can include an Intimate Partner.
Intimate Partner Violence includes physical and sexual violence, threats of physical or sexual violence, stalking, and psychological aggression by a current or former intimate partner.

NOTE: *Sample size too small for estimate. Among adults 18 and older.
SOURCE: CDC. (2013). The National Intimate Partner and Sexual Violence Survey: 2010 Findings on Victimization by Sexual Orientation.



Follow us on Instagram
[@hartwick_peerhealth](https://www.instagram.com/hartwick_peerhealth)



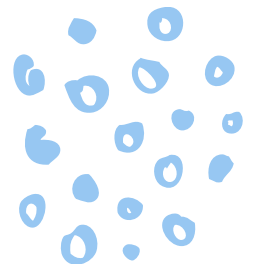
RESOURCES

The Stall Street Journal

A MONTHLY PEER HEALTH EDUCATOR NEWSLETTER
APRIL 2021

Sexual Assault Resources

Title IX at Hartwick College is a great resource!
You can report online or call 607-431-4293



The Counseling Center at Hartwick College is another great resource! Counseling is completely **confidential!**

Phone: 607-431-4420
counselingcenter@hartwick.edu

If you are more comfortable speaking with a professor, staff member, or coach that is completely **normal and okay!** However, please know that while the other resources are **confidential**, speaking to a faculty/staff member **does not** guarantee confidentiality.

RAINN is the National Sexual Assault Hotline

1-800-656-4673



Follow us on Instagram

@hartwick_peerhealth