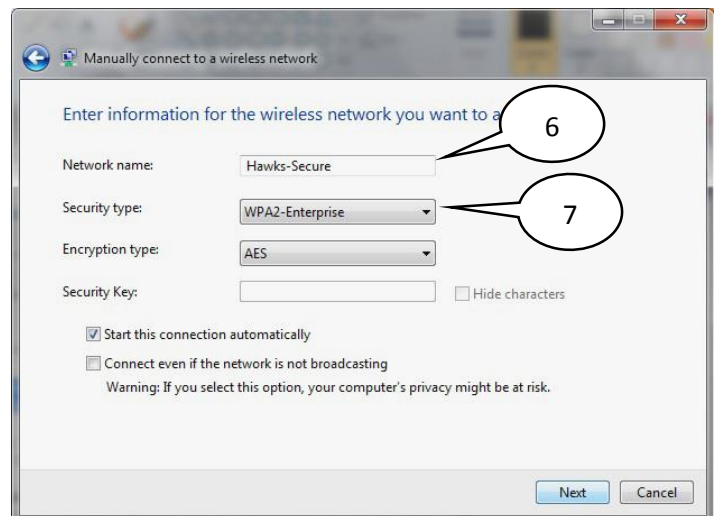
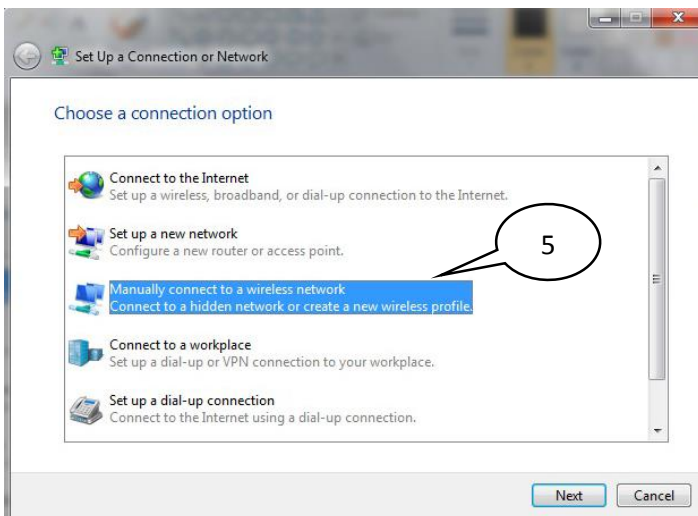
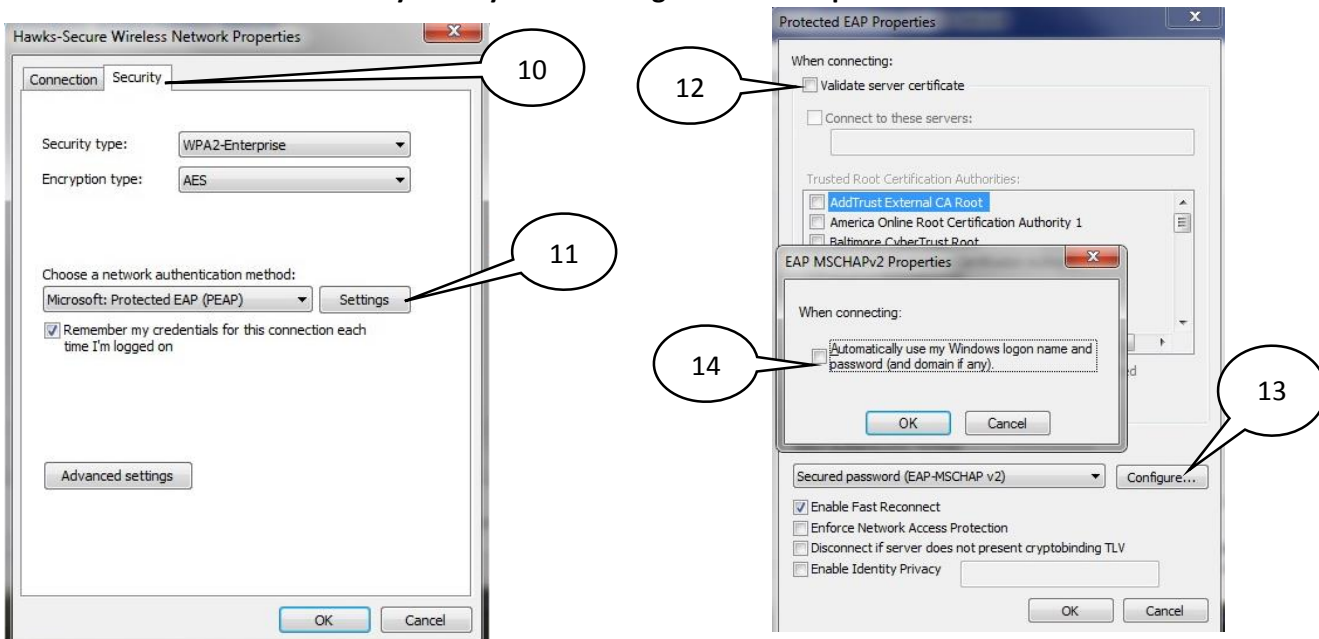


## Connecting to the Hawks-Secure Wireless Network – Windows 7, 8, and 10

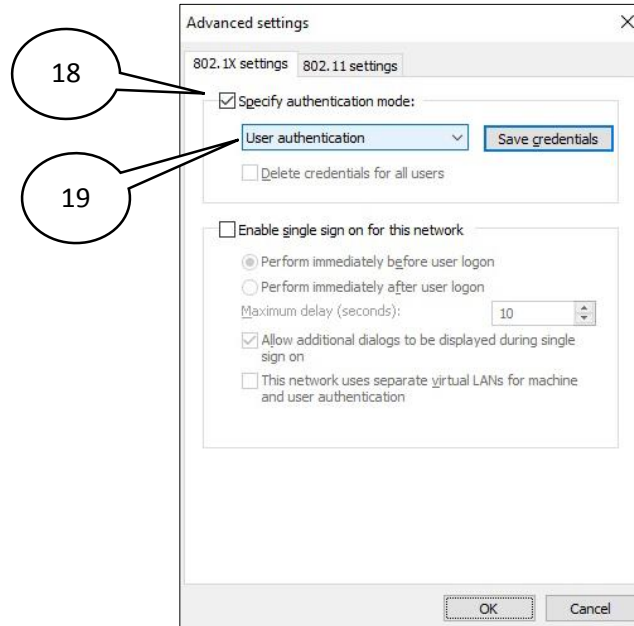
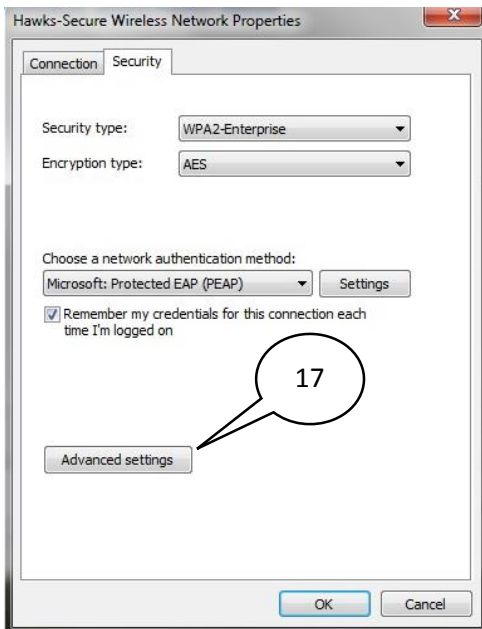
1. Navigate to your laptop's Desktop screen
2. In your system tray (lower right corner), **right-click on the network icon**
3. Select '**Open Network and Sharing Center**'
4. Select **Set up a new connection or network**
5. Select '**Manually connect to a wireless network**' and click **next**
6. Enter the network name **Hawks-Secure** exactly as it appears below. The network name is case sensitive and must be typed exactly as below, with no spaces.
7. From the drop-down menu, select **WPA2 Enterprise** as the security type
8. Click **Next**



9. Click **Change Connection Settings**
10. Select the **Security tab**
11. Click the **Settings** button (to the right of Microsoft Protected EAP)
12. **Uncheck** the box for '**Validate Server Certificate**' (in some operating systems, may say "Verify the server's identity by validating the certificate")
13. Click the **Configure** button
14. Make sure the '**Automatically use my Windows logon name and password**' is **unchecked**



15. Click **OK**
16. **Click OK**
17. Back in the Hawks-Secure Wireless Network Properties window, **click Advanced settings**
18. **Check the box for Specify authentication mode**
19. **From the drop-down list, select User authentication**
20. **Click OK**
21. **Click OK**
22. **Click Close**



23. In your system tray, click the icon for wireless networks
24. You may immediately get a Windows security sign in window. If not, click Hawks-Secure and click Connect.
25. Enter your Hartwick network username (without the @hartwick.edu)
26. Enter your Hartwick network password
27. Click OK

You should now be connected to Hawks-Secure and may use this network anywhere on campus.

If you have questions about the network or need assistance, please contact us:

**Technology Resource Center**  
 Clark Hall 150 Monday-Friday 9am-5pm  
 607-431-4357  
[technology@hartwick.edu](mailto:technology@hartwick.edu)

**Welcome Weekend we are open Sunday August 28<sup>th</sup> 1pm-5pm!**